

# Sakura Elevator won the 2018 Taiwan Excellence Award



# GPX

Machine room less elevator

Enduring noble, texture chain



[www.sakuralift.com.tw](http://www.sakuralift.com.tw)



## GPX-A

### ◆ Cabin elegant appearance / Technology operation panel

Sakura Elevator not only provides various interior or decoration but also can customize your own elevator.



HC = 2200



BB = 1000

AA = 1200(P6)  
1400(P8)



## Specification

Ceiling / Two-color with pattern steel

Light / LED

COP / Technology panel

Handrail / Stainless steel handrail

Floor / Hard PVC

Cabin / Pattern steel plate

Landing / stainless steel

Door / Pattern steel plate

HOP / Technology panel

### Quality

Higher quality touch

### Humanity

Intimate human interface

### Energy Saving

Environmental space design

This product color sample reference style



LW-1002



LG-04



Z03



LNA-108



LG01

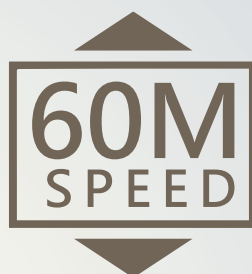
The above product styles are for reference only, the style is based on real products





## ◆Car entrance to increase design

Our design cab save the space and provide the maximum cabin size for the customer. No matter what kind of the construction, we all can provide the most space-saving solution.



## ◆Speed of 60 meters

Smart control and excellent technology, which we used it to give our customer new experience.



## ◆PM MOTOR

Our PM motor has double brake device to ensure passenger's safety with small size, saving space, more efficient, and energy saving.



## ◆Energy-saving A-level

Under the same condition, Our elevator can use less energy and lower the energy costs, especially for high Energy-consuming product.



## ◆Lift Smart Panels

When each floor calls, it will take cabin to the most useful position which shorten the time of waiting.



It can be Accessible elevator when the elevator is for 8 person.



GPX-B



HC = 2200

BB = 1000

AA = 1200(P6)  
1400(P8)

## Specification

Ceiling / Full-ceiling dome light

Light / LED

COP / Technology panel

Handrail / Stainless steel handrail

Floor / Hard PVC

Cabin / Pattern steel plate

Landing / stainless steel

Door / Makeup steel pattern

HOP / Technology panel

AA = 1000



HC = 2200

JJ = 900



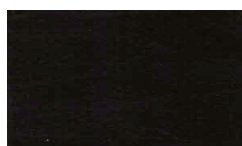
HH = 2100

This product color sample reference style

The above product styles are for reference only, the style is based on real products



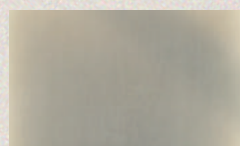
LNW-24



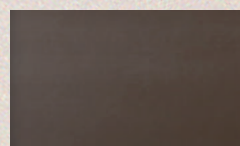
LG-04



LW-1002



Y01



NEB-08





If the elevator is not used automatically return to the floor



Low-power, single-phase plug operation.

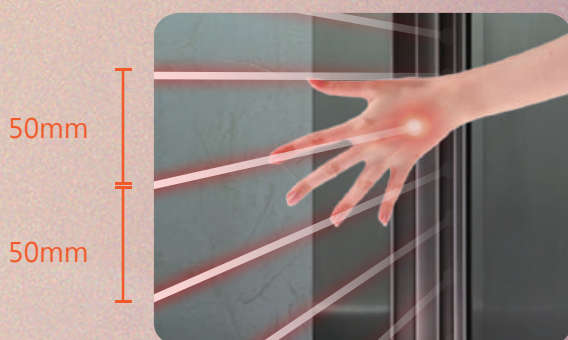


(Increase price)

Backup Power Battery (UPS)

## ◆Infrared security door edge

Certified, follow the International standards, and reliable design.



## ◆Door Type



Large glass door



Wide Door Jamb



Transom

# Machine Roomless Elevator

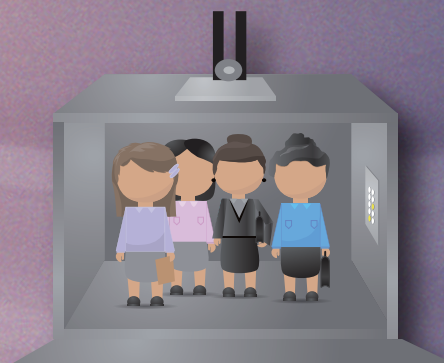


CE Machine room less elevator



## ◆Machine room less elevator

1. save the cost of the room.
2. Construction time is short.
3. Solve the OH height restrictions.
4. Replace the hydraulic lift.
5. No noise, no vibration.
6. Energy-saving design.
7. The characteristics of seismic sensors



## ◆Dock directly

Based on the distance, the automatic calculation generates a running speed from start to stop. The system automatically generates the optimal speed according to the deceleration distance without crawling distance, thereby reducing time waste.



# SMART MAINTENANCE SYSTEM(SMS)

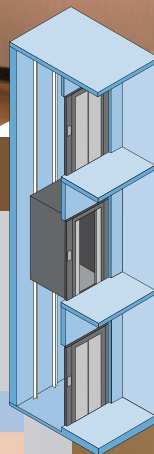
*This product won the Taiwan Excellence Award*



TAIWAN EXCELLENCE 2018

## GPX Elevator specifications

Use	(GPX-450,550)		
Weight	450KG,	550KG	
Speed	45M/min 60M/min		
Control method	AC-VVVF		
	Automatic button selection		
Power	60H220V		Light 60H110V
machine	3.0KW / 3.7KW		
Car size	W1000/D1200/H2200	W1000/D1400/H2200	
Well size	W1650/D1550	W1650/D1750	
Entrance size	W900 / H2100		
Door open	Side open automatically		
Guide	8K/m		Counterweight 8K/m
Cable	φ8X4		Cable ratio 2:1
Speed steel cable	φ 8X1條		
OH	3700	(3900)	
Pit	1250	(1550)	
Safety devices	CNS The law requires equipment		
Elevator project exclusion			
(All items in this column are supplied by the owner for construction and electrical work)			
1	Lifting and road construction and pit waterproofing		
2	The entrances and exits required for the hole reserved		
3	After the installation of elevator door frame to fill the wall and whitewash works		



ELEVATOR  
INNOVATOR



**SAKURA**

Taichung branch

TEL:+886-4-2335-9598

No.708, Sec. 8, Huanzhong Rd., Wuri  
Dist., Taichung City 414, Taiwan

Tainan Branch

TEL:+886-6-254-1133

No.56 Zhengnan 1st. S., Yongkang  
Dist., Tainan City 710, Taiwan

Kaohsiung Branch

TEL:+886-7-716-7115

1F., No.7, Wuzhi St., Lingya Dist.,  
Kaohsiung City 802, Taiwan

[www.sakuralift.com.tw](http://www.sakuralift.com.tw)



SAKURA Elevator Co., Ltd.